

Faber Plaza

4400 LEEDS AVENUE, NORTH CHARLESTON









MOVE-IN READY SUITES



**MODERN.
ACCESSIBLE.
EFFICIENT.**

**Five-story, 125,000 SF
Class-A Office Building
10,661 SF Available**

FEATURES

-  Column-free 25,000 SF floorplates
-  Energy Star Certified = Lower Operating Costs; 35% more energy efficient than the national average
-  Highly visible from Leeds Avenue with immediate access to I-526 and I-26
-  Adjacent to The Executive Park at Faber Place and World Trade Center Charleston
-  Surrounded by over 50 restaurants, 20 hotels, and 12 banks
-  Park-like setting with live oaks, relaxing water features, walking paths, picnic areas and a nature preserve
-  Responsive property management and on-site building engineer
-  24/7 access control system



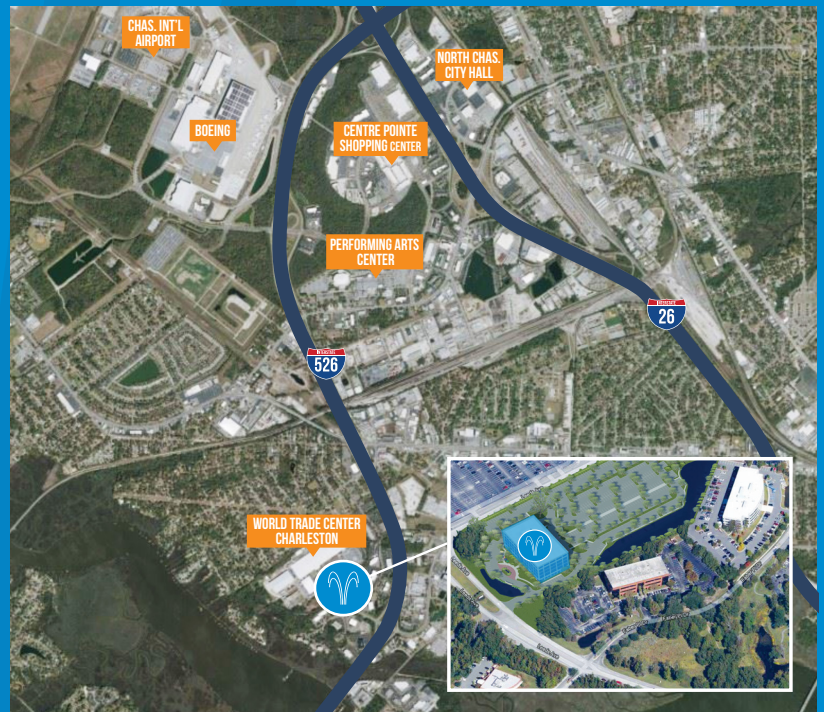


Available Suites

- SUITE 175: 1,709 SF MOVE-IN READY
- SUITE 200: 1,000 SF 1ST GEN
- SUITE 220: 1,766 SF MOVE-IN READY
- SUITE 430: 3,807 SF MOVE-IN READY
- SUITE 480: 2,379 SF 1ST GEN

Corporate Neighbors

- | | |
|------------|----------------|
| BLUE CROSS | MERITAGE HOMES |
| CUMMINS | SONEPAR |
| DSV | TRANSYSTEMS |
| HDR | |
| IOA | |

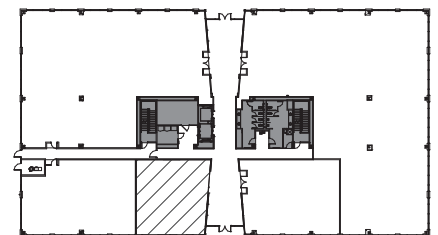
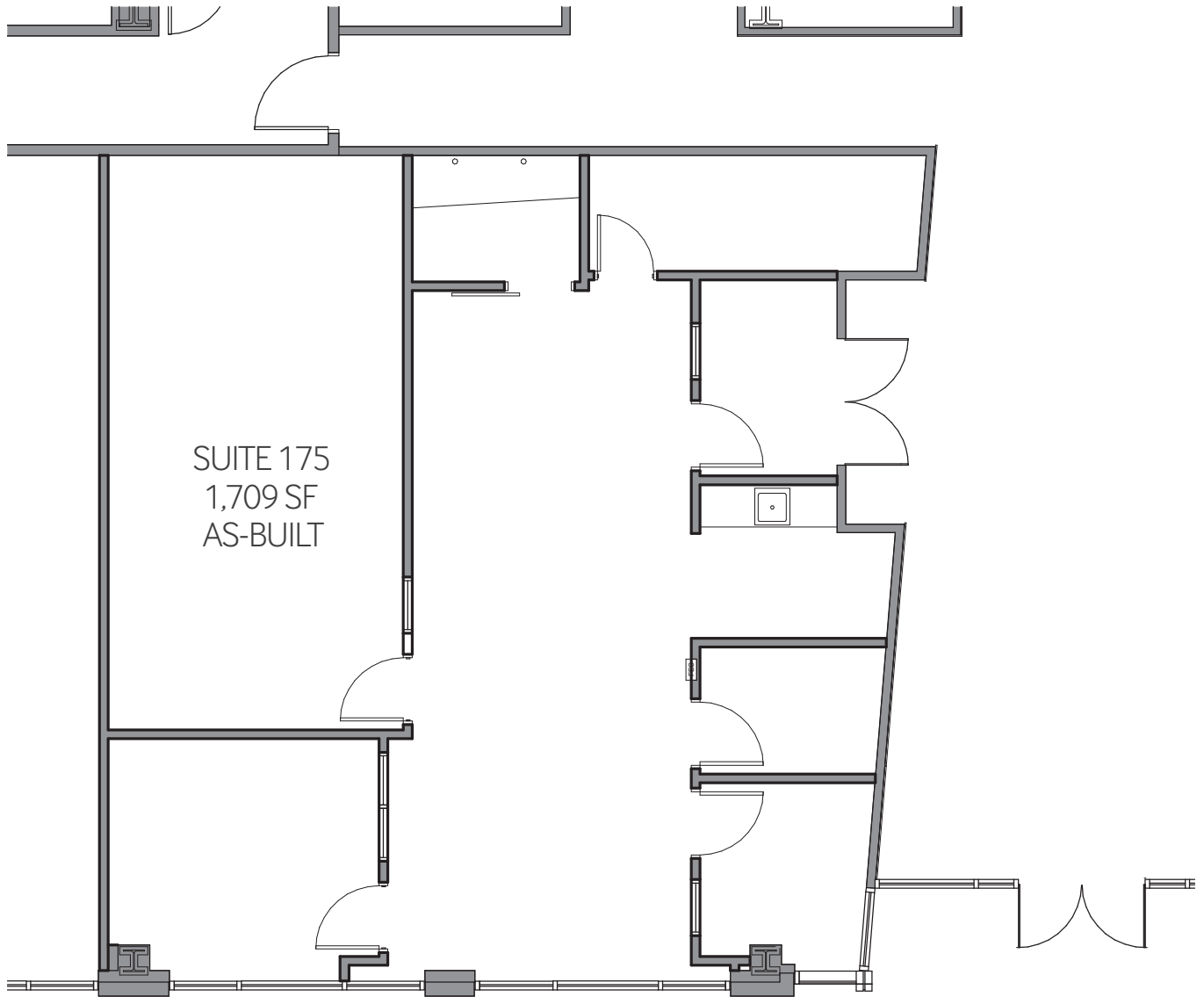


JOHN DURLACH
843.723.2848
JDURLACH@DURLACH.COM

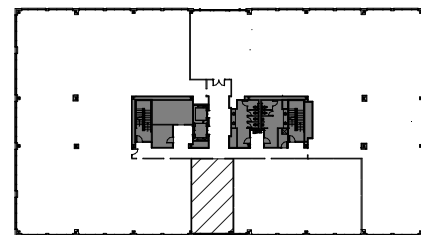
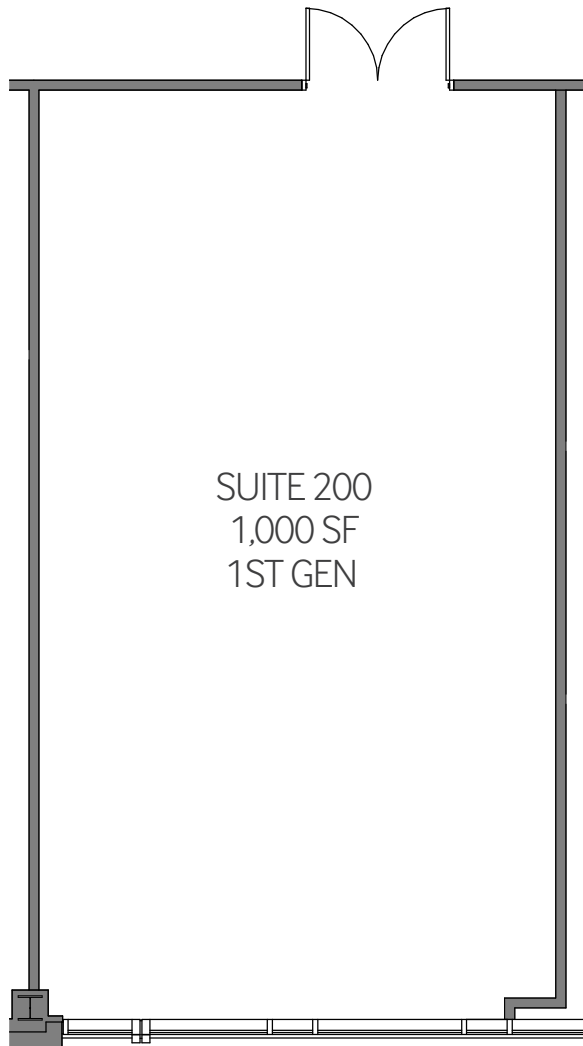
CJ DEMPSEY
843.300.0056
CJ@DURLACH.COM

DURLACH
ASSOCIATES
WWW.DURLACH.COM

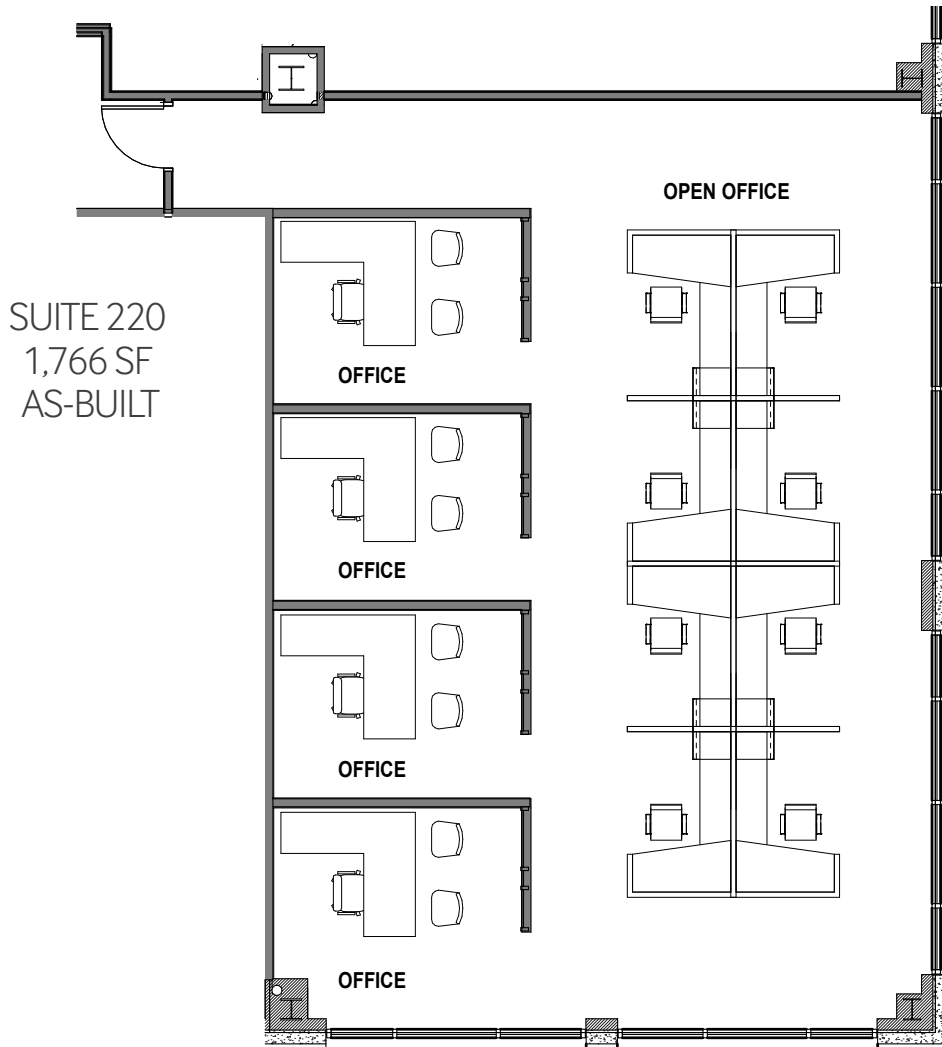




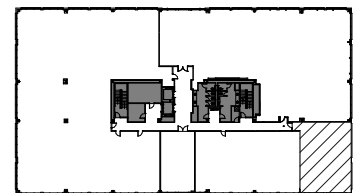
KEY PLAN



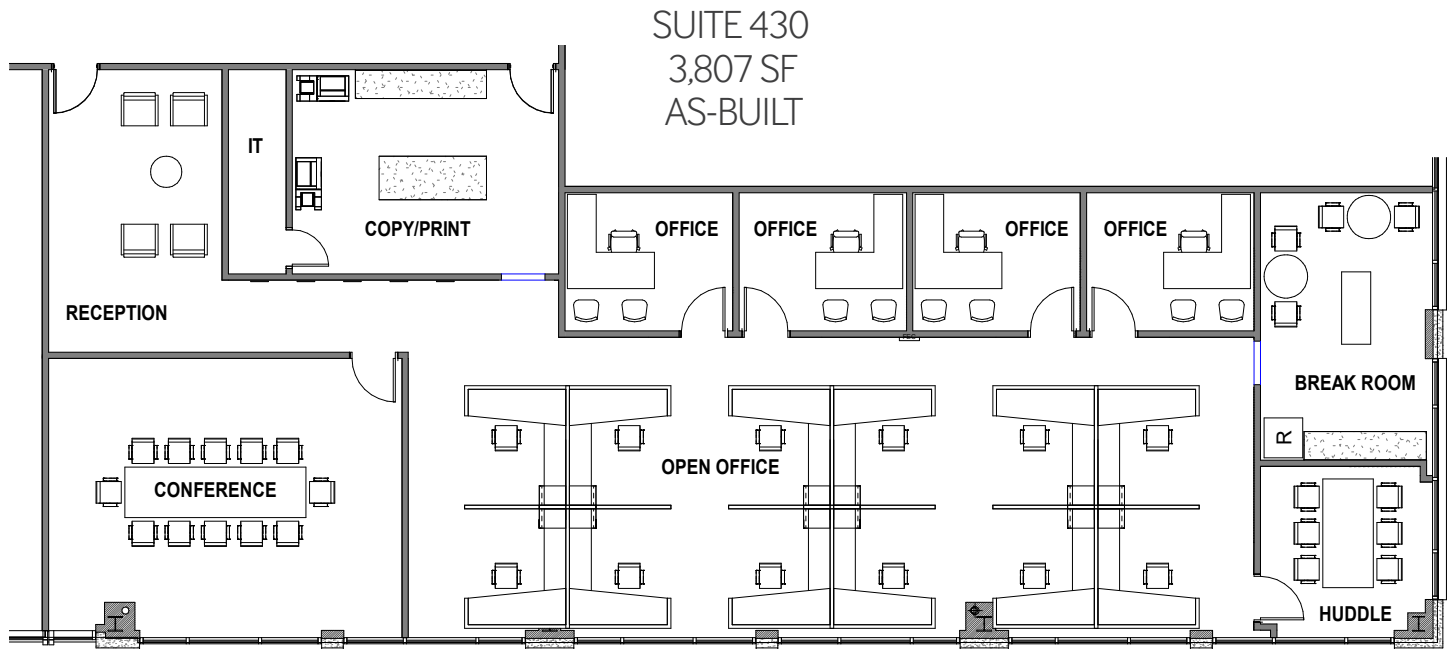
KEY PLAN



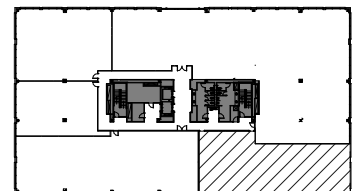
Furniture shown for representation purposes only.



KEY PLAN



Furniture shown for representation purposes only.



KEY PLAN

JOHN DURLACH

843.723.2848

JDURLACH@DURLACH.COM

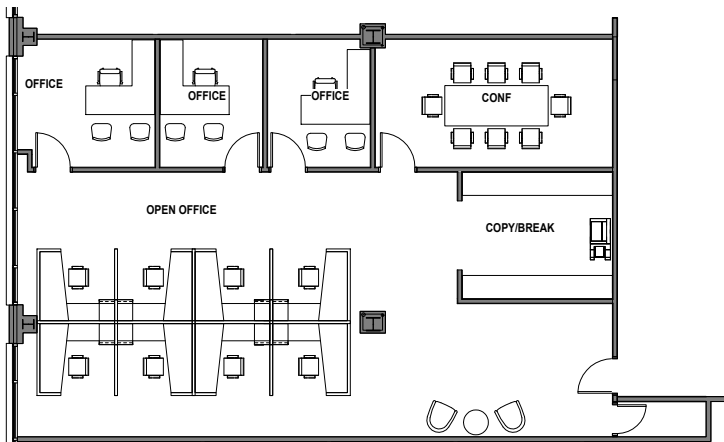
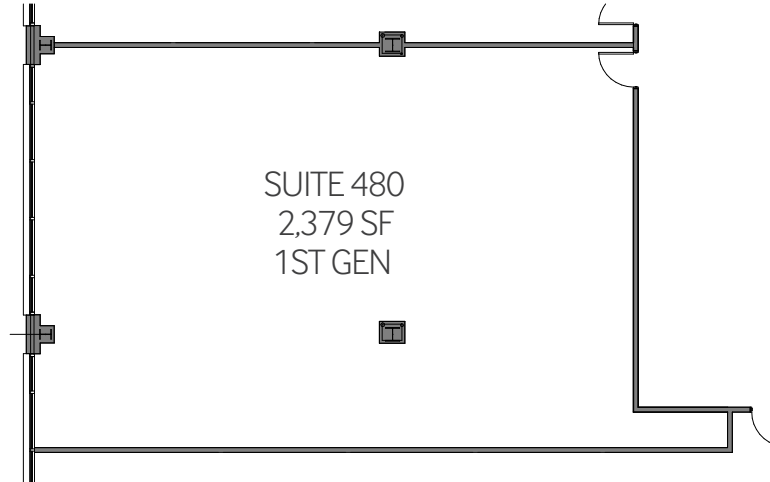
CJ DEMPSEY

843.300.0056

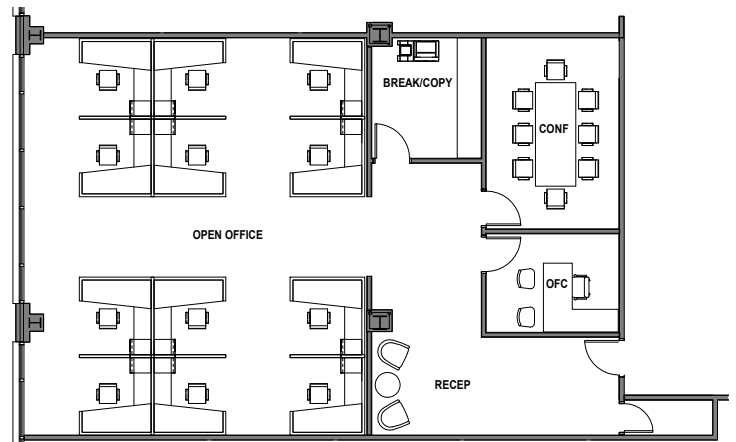
CJ@DURLACH.COM

DURLACH
ASSOCIATES

WWW.DURLACH.COM

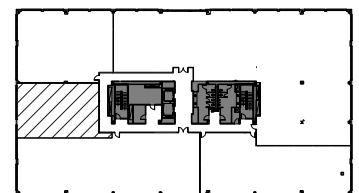


CONCEPT 1



CONCEPT 2

Furniture shown for representation purposes only.



KEY PLAN